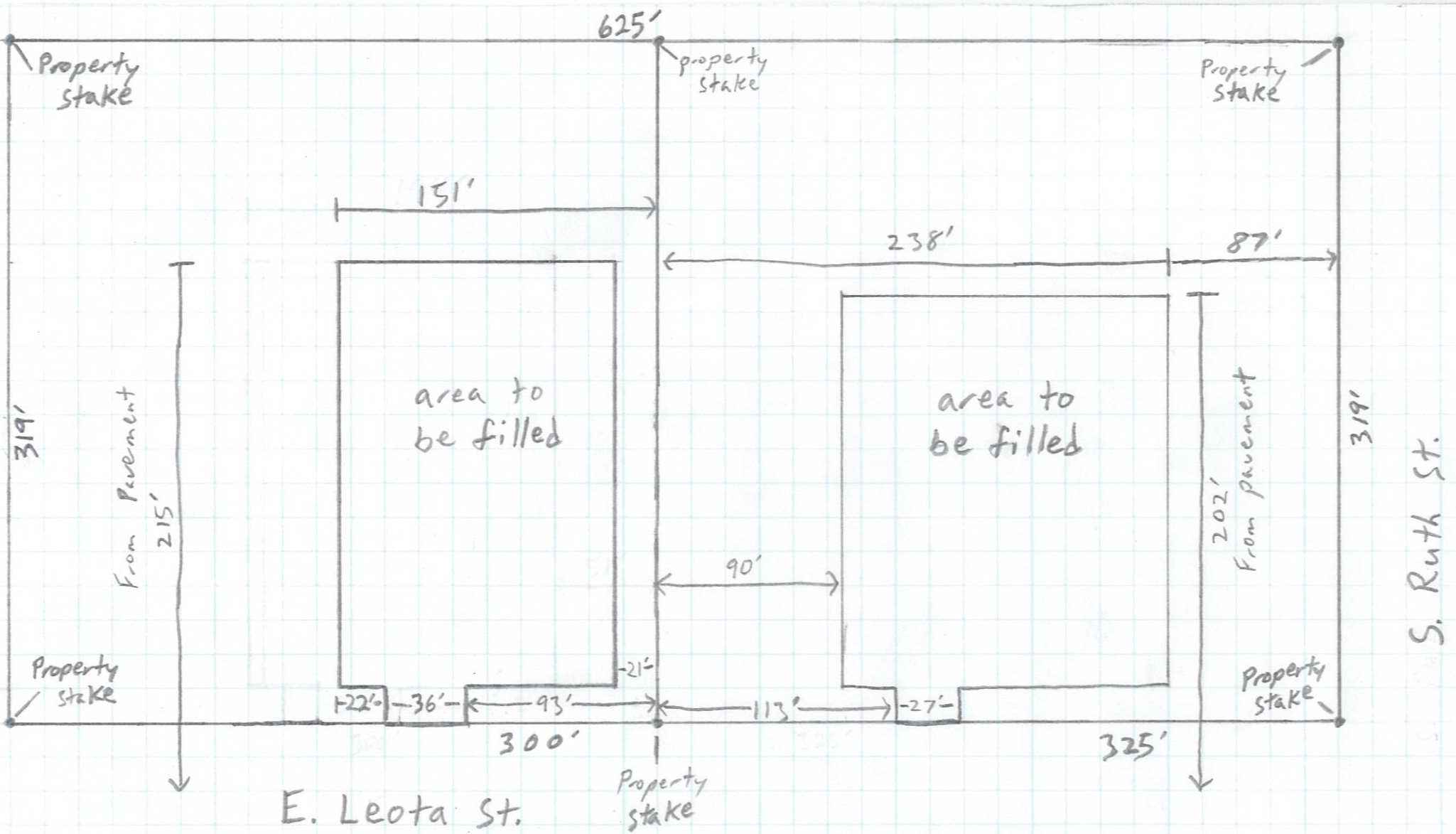


POA-2014-215, Cottonwood Creek, Brian & Stacy Christman  
Residential Development  
Lat. 61.5564 N., Long. 149.4448 W.  
Sheet 1 of 2, July 22, 2014



Fill approx.  
24"-36"

1/4" = 1-Grid ≈ 16' approx.

POA-2014-215, Cottonwood Creek, Brian & Stacy Christman  
Residential Development  
Lat. 61.5564 N., Long. 149.4448 W.  
Sheet 2 of 2, July 22, 2014